



Gaffney Technology has been an innovator in the O&P industry since 1987. As developers of stainless steel ankle hinges, Gaffney flexor, as well as the polyurethane and screw-in bumpers, we are dedicated to remaining in the forefront in developments in the orthotic profession.

All our metal components are made from high quality stainless steel. The pins and washers go through strict heat treatment to maximize hardness and durability. After being precision machined, the components are hand finished, then assembled to tight tolerances. All of these ensure excellent functioning hinges for ankle foot orthosis and other demanding applications.

GAFFNEY BUMPERS

Product number - B-350

Product number - B-400

-
- *Cost-effective elastic bumper cords in 5 feet (152mm)*
 - *Can be cut to desired lengths*
 - *B-350 has a diameter of 5/16" (7.9mm)*
 - *B-400 has a diameter of 3/8" (9.5mm).*



Product number - B-1000

Product number - B-1000-100

Product number - B-2000

Product number – B-2000-100

- Injection molded urethane bumpers providing damping effects to braces
- B-1000 has ten 5/16" (7.9mm) diameter bumpers and one drill bit
- B-2000 has ten 3/8" (9.5mm) diameter bumpers and one drill bit.
- B-1000-100 has 100 B-1000 size bumpers without drill bit
- B-2000-100 has 100 B-2000 size bumpers without drill bit



Product number – AB-1000

- Adjustable height using provided L key
- Bumper same as B -1000 (7/16")
- Each pack has one custom machined stainless steel jackscrew, one molded bumper and one 1/8" L key



GAFFNEY FLEXORS

Product number - 2000

Product number – 2000-B

Product number – 2000-C

- *Designed for providing dorsi-flexion assistance for children*
- *Custom machined stainless steel nuts and screws*
- *Straps to be put on and taken off by hand*
- *Designed to be used on both lateral and medial sides*
- *Each pack including four sets of screws and nuts, two children size Gaffney straps.*
- *P/N 2000 - white straps at 80 durometer*
- *P/N 2000-B - black straps at 80 durometer*
- *P/N 2000-C - clear straps at 85 durometer*



Product number - 2001

Product number – 2001-B

Product number – 2001-C

- *Designed for providing dorsi-flexion assistance for adults*
- *Custom machined stainless steel nuts and screws*
- *Straps to be put on and taken off by hand*
- *Designed to be used on both lateral and medial sides*
- *Each pack including four sets of screws and nuts, two adult size Gaffney straps.*
- *P/N 2001 - white straps at 80 durometer*
- *P/N 2001-B - black straps at 80 durometer*
- *P/N 2001-C - clear straps at 85 durometer*



Product number – 4000

Product number – 4001

- *Designed for unilateral braces*
- *Two elongated bolts holding 2 straps*
- *4000 is child size with white straps*
- *4001 is adult size with white straps, also available in clear(4001-C) and black(4001-B)*



Product number - 2010

Product number – 2012

Product number – 2010-B

Product number – 2012-B

Product number – 2010-C

Product number – 2012-C

- *2010 – two Children size replacement Gaffney straps, White*
- *2010-B – two Children size replacement Gaffney straps, Black*
- *2010-C – two Children size replacement Gaffney straps, Clear*
- *2012 – two adult size replacement Gaffney straps, white*
- *2012-B – two adult size replacement Gaffney straps, black*
- *2012-C – two adult size replacement Gaffney straps, Clear*



Gaffney Hinge Kits

Product number – 505 Colt

- Width 7/16" Length 1 ½"
- Designed for the newborn to 1 ½ years old weighting between 0 to 40 pounds*
- Made of 12-gauge stainless steel
- Includes 2 hinges plus screws, bumpers and nails



Product number – 510 Pony

- Width 7/16" Length 2"
- Patient weight between 20 and 75 pounds*
- Designed for the small child to avoid the distal portion of hinge interference with the control area
- Help in shoe space problems
- Made of 12-gauge stainless steel
- Includes 2 hinges plus screws, bumpers and nails



Product number – 660 Stallion

Product number – 660-T

- Width 7/16" Length 2 ½"
- Designed for children up to small adults weighing between 40 and 75 pounds (for 660-T)/between 75 and 130 pounds (for 660)*
- Made of 10 gauge (660) or 12 gauge (660-T) stainless steel
- Includes 2 hinges plus screws, bumpers and nails



Product number – 705 Mustang

- Width 9/16" Length 2"
- Designed for adolescents and adults weighing between 125 and 175 pounds*
- Short hinge with extra width for more wear surface
- Made of 10-gauge stainless steel
- Includes 2 hinges plus screws, bumpers and nails



Product number – 707 Filly

- Width 9/16" Length 2 1/2"
- Designed for teens and adults weighing between 125 and 175 pounds*
- For use when a small distal portion is desired to avoid bone prominence or interference in control area
- Help in shoe fit
- Includes 2 hinges plus screws, bumpers and nails



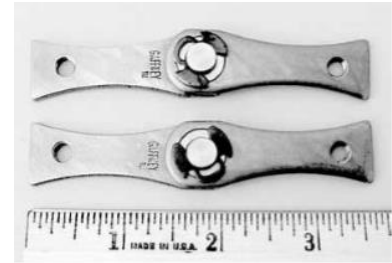
Product number – 710 Bronco

- Width 9/16" Length 3"
- Designed for teens and average size adults weighing between 125 and 190 pounds*
- Made of 10-gauge stainless steel
- Includes 2 hinges plus screws, bumpers and nails



Product number – 810 Clydesdale

- Width 7/16" Length 3 1/2"
- Designed for adults weighing between 160 and 220 pounds*
- Made of 10 gauge stainless steel
- Includes 2 hinges plus screws, bumpers and nails



*The weight ranges are for guidance only, as no two users are the same. Activity levels, height, and age (for those still growing) should be taken into consideration.

Alignment Tools

Product number A-600

Product number A-700

Product number A-800

- A-600 Designed for hinges 505, 510, 660, and 660-T
- A-700 Designed for 705, 707 and 710
- A-800 Designed for 810



Repair kits

Product number PK-500

Product number PK-600

Product number PK-700

Product number PK-800

- Including two pins, two washers and two clips
- PK-500 for 505, 510 and 660-T
- PK-600 for 660
- PK-700 for 705, 707 and 710
- PK-800 for 810



BUCKLES

Product number GB-100 Product number GB-200 Product number GB-400

These ratcheting buckles provides incremental tightness for fastening and other applications. All part numbers include a buckle and a strap

- GB-100 has a metal lever



- GB-200 is a low-profile buckle



- GB-300 is a low-profile buckle with a Y shaped strap



Water Bottles

Product number GWB-20-blue

Product number GWB-20-black

These water bottles feature an award-winning cap design, which allows one hand operation without twisting.

